



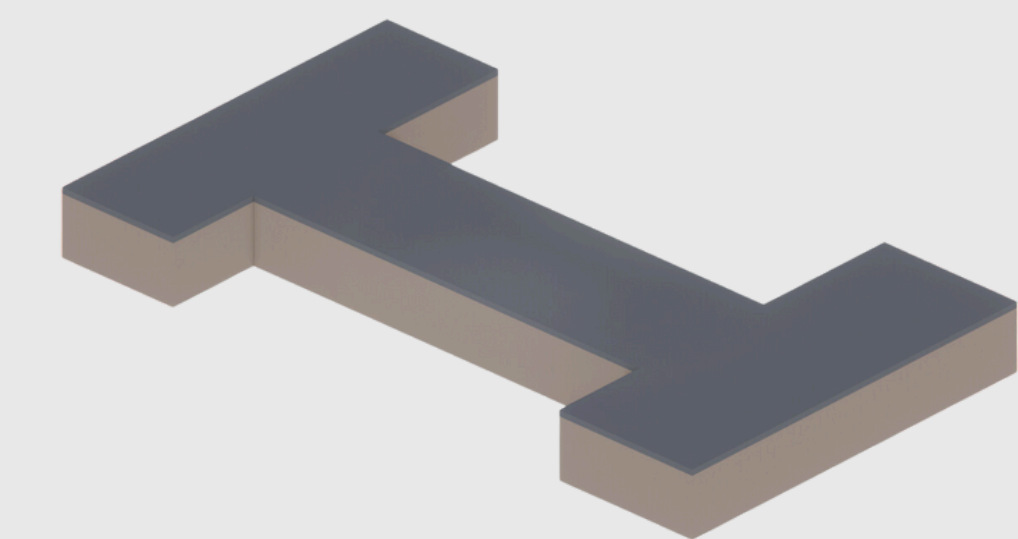
# THE CHHERA HAUS

The building merges brutalist form with the **rhythm of Chetti culture**. Its exterior, carved in red dance movements, echoes the fluidity of Chetti traditions, reminiscent of the expressive colours of the chetti community.

A vibrant staircase guides visitors upward, leading to a pathway suspended above water on the ground floor, inviting reflection and movement. Above, a glass sphere filled with water crowns the rooftop, its reflective surface adding a poetic touch. The rooftop garden offers sweeping views, while the open cafe blends seamlessly with the natural surroundings. At the heart of the structure, the dance theater—an austere concrete space—amplifies the power and grace of Chetti performances. The design fuses raw architecture with art, nature, and culture, creating a dynamic and immersive experience.



# Massing and form development

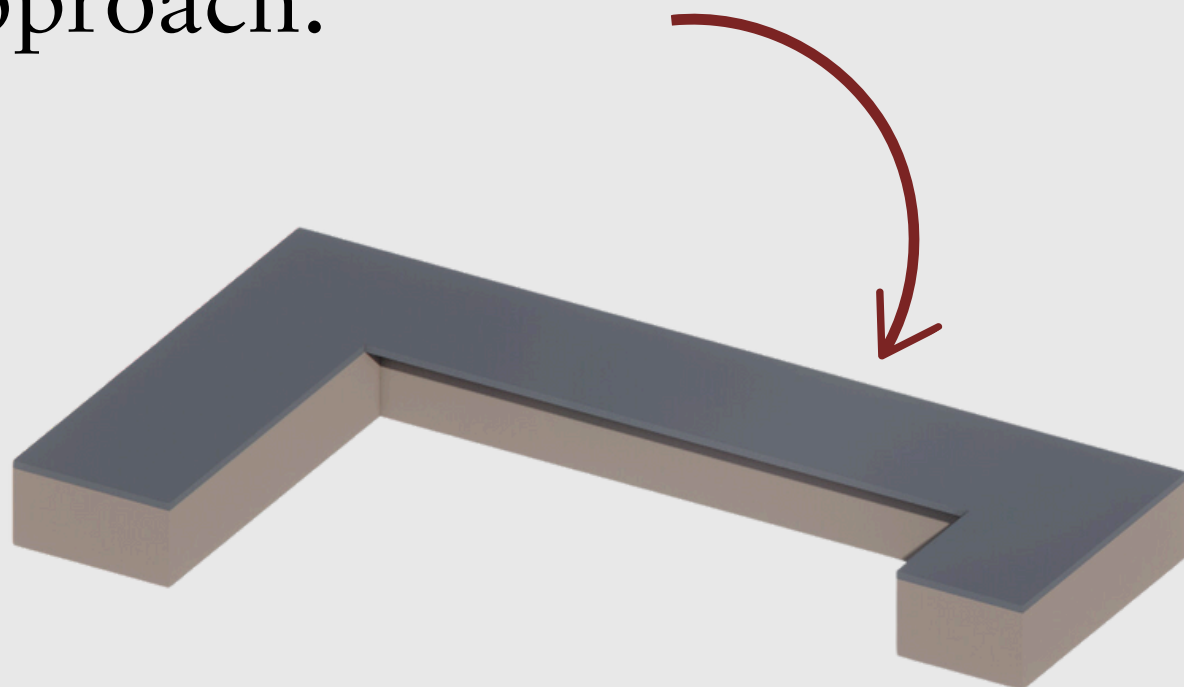


## Holding hands

The interchange dance got a pose where 2 dancers hold eachothers hands and breakaway. Balancing the spaces with the symmetrical approach.

## Breaking away

The moment they break away but still holding by one hand.Making it asymmetrical and trying to respond to the site context.

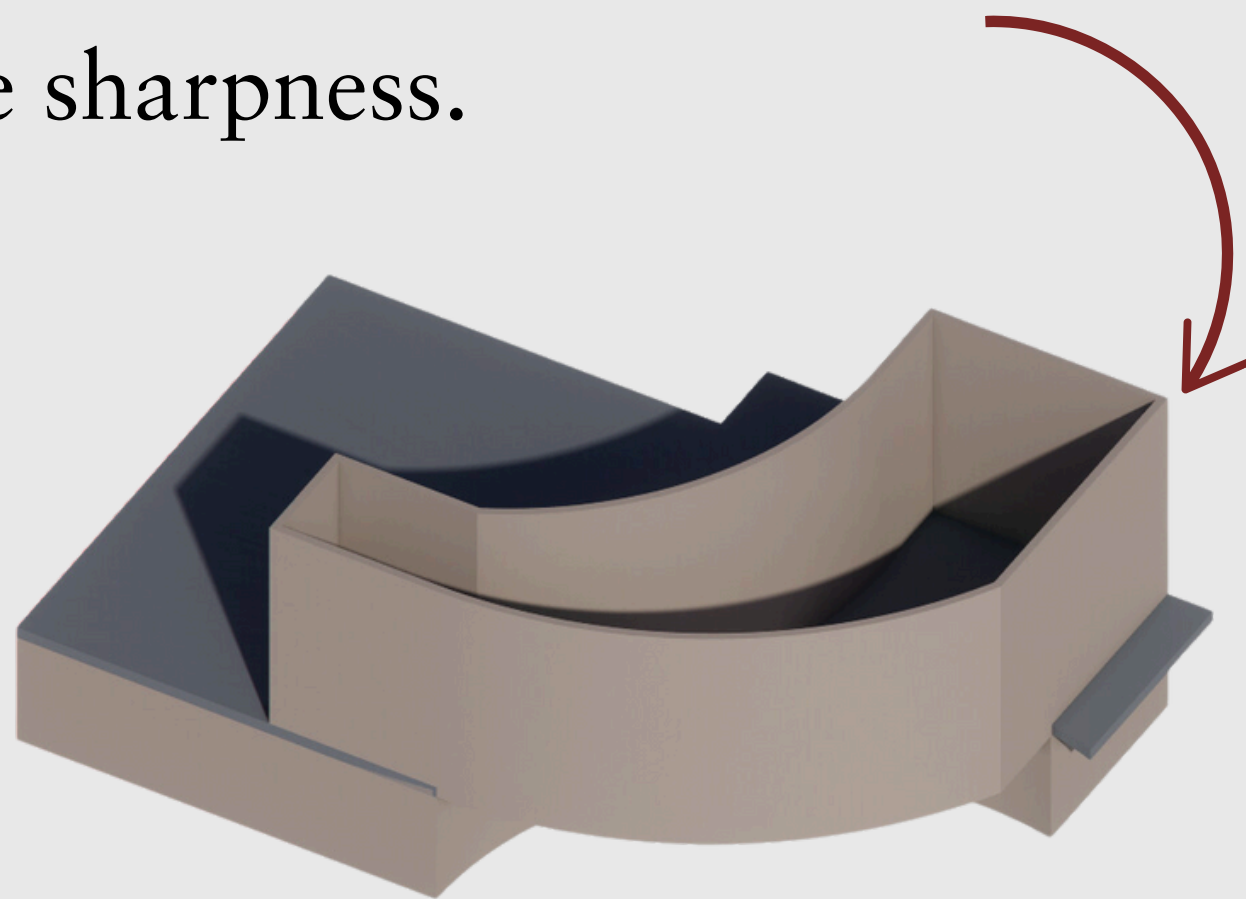


## Reducing the mass

Reduced the mass from the previous design to make the journey not extended but together and added curvy feature to show case the smoothness in the dance yet the sharpness.

## Final form

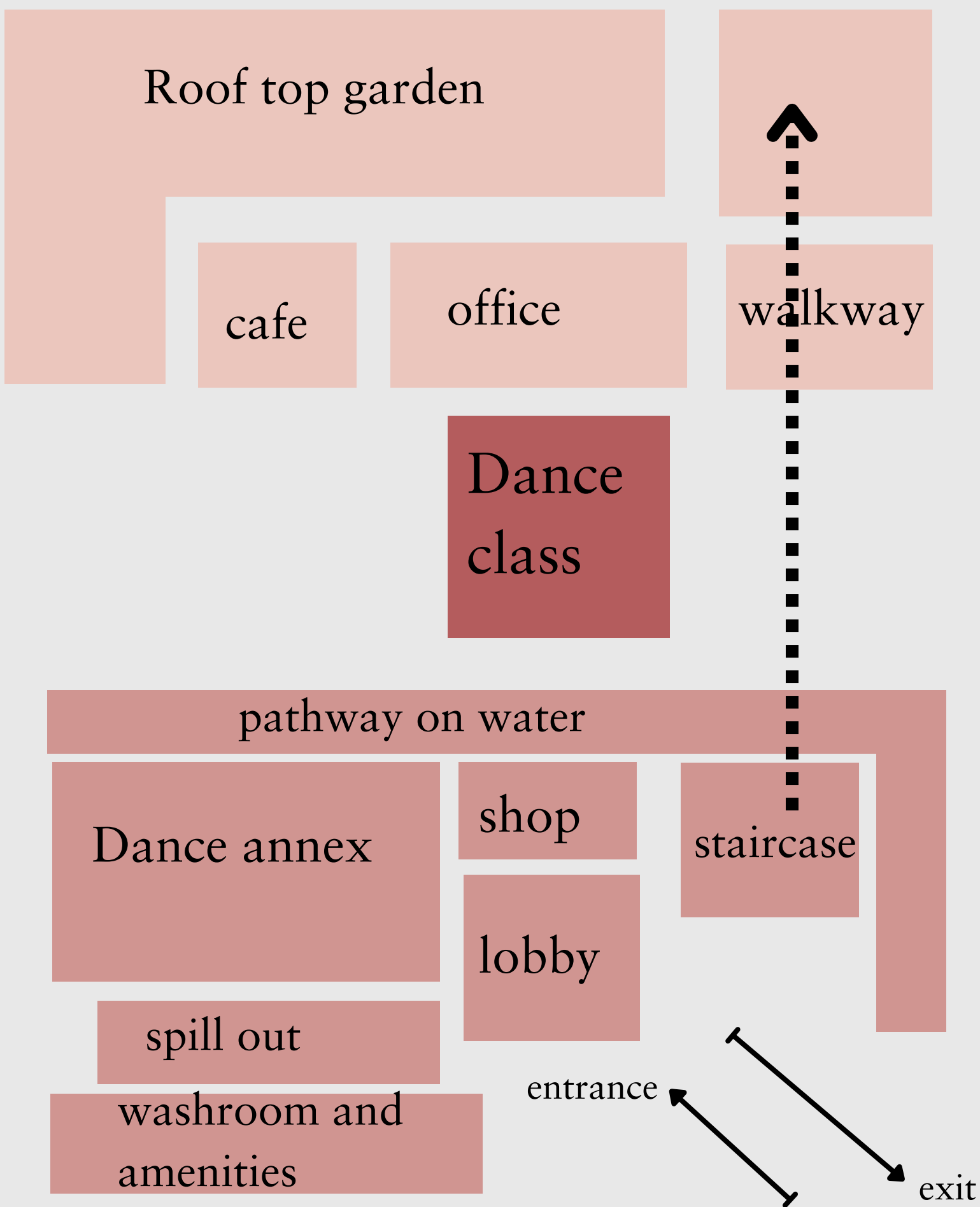
By condensing the form, the design shifts the focus from an extended or expansive journey to one that is more unified and cohesive.Introduction of curves effectively conveys the elegance, flow, and seamless movements found in dance.



# Genius loci

The dance annex embodies the spirit of place through its harmonious integration of architecture, art, and nature. The pathway on water creates a serene and elegant ambiance, mirroring the fluidity and grace of dance, while also showcasing the importance of water to the Chetti community. The curvilinear forms, expansive glass façade, and dynamic architectural elements emphasize openness and flow, reflecting the rhythm of dance. The green roof and surrounding landscape add vitality, connecting the built environment with nature, while seating areas and interactive pathways make the space welcoming and human-centric. Together, these elements celebrate cultural identity and inspire a sensory and introspective experience for visitors and performers alike.

# Spatial organization



- first floor
- sub floor
- second floor





# Site plan

Offshore wind

Evening sun

Afternoon sun

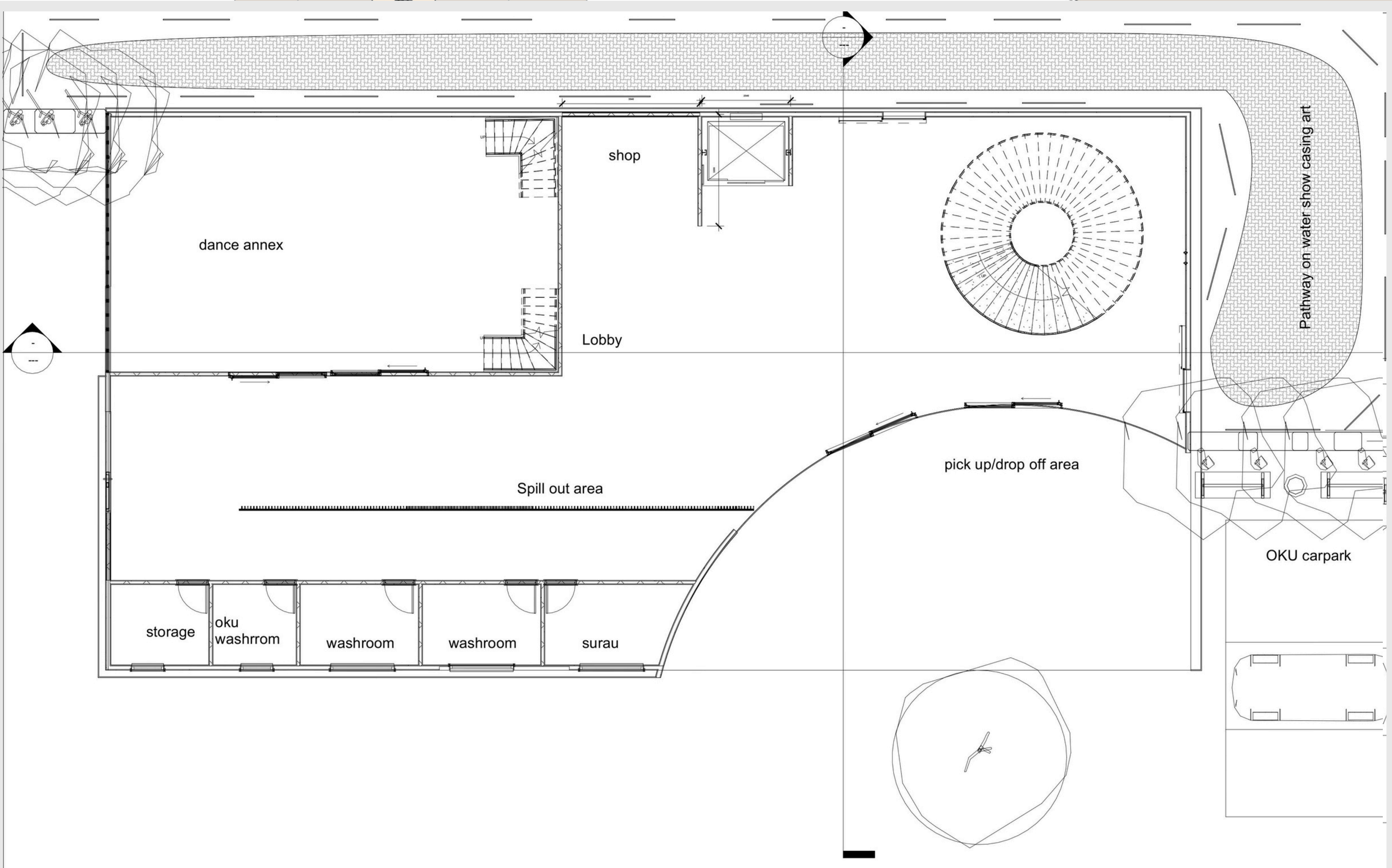
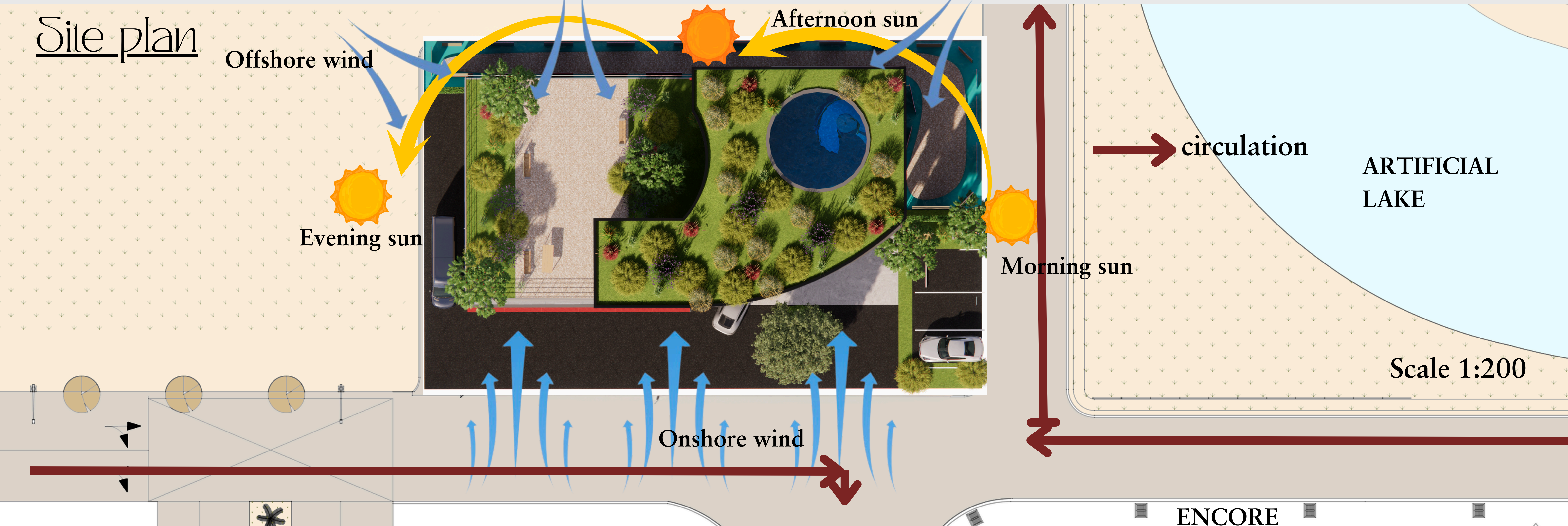
Morning sun

Onshore wind

circulation

ARTIFICIAL LAKE

Scale 1:200



ENCORE

## Ground floor plan

Scale 1:100

| <u>Space</u>      | <u>Area</u> |
|-------------------|-------------|
| 1)Dance annex     | 210m2       |
| 2)Storage         | 7.5m2       |
| 3) Oku washroom   | 7m2         |
| 4)Normal washroom | 9m2         |
| 5)Surau           | 9.5m2       |
| 6)Shop            | 16m2        |
| 7)Classroom       | 52m2        |



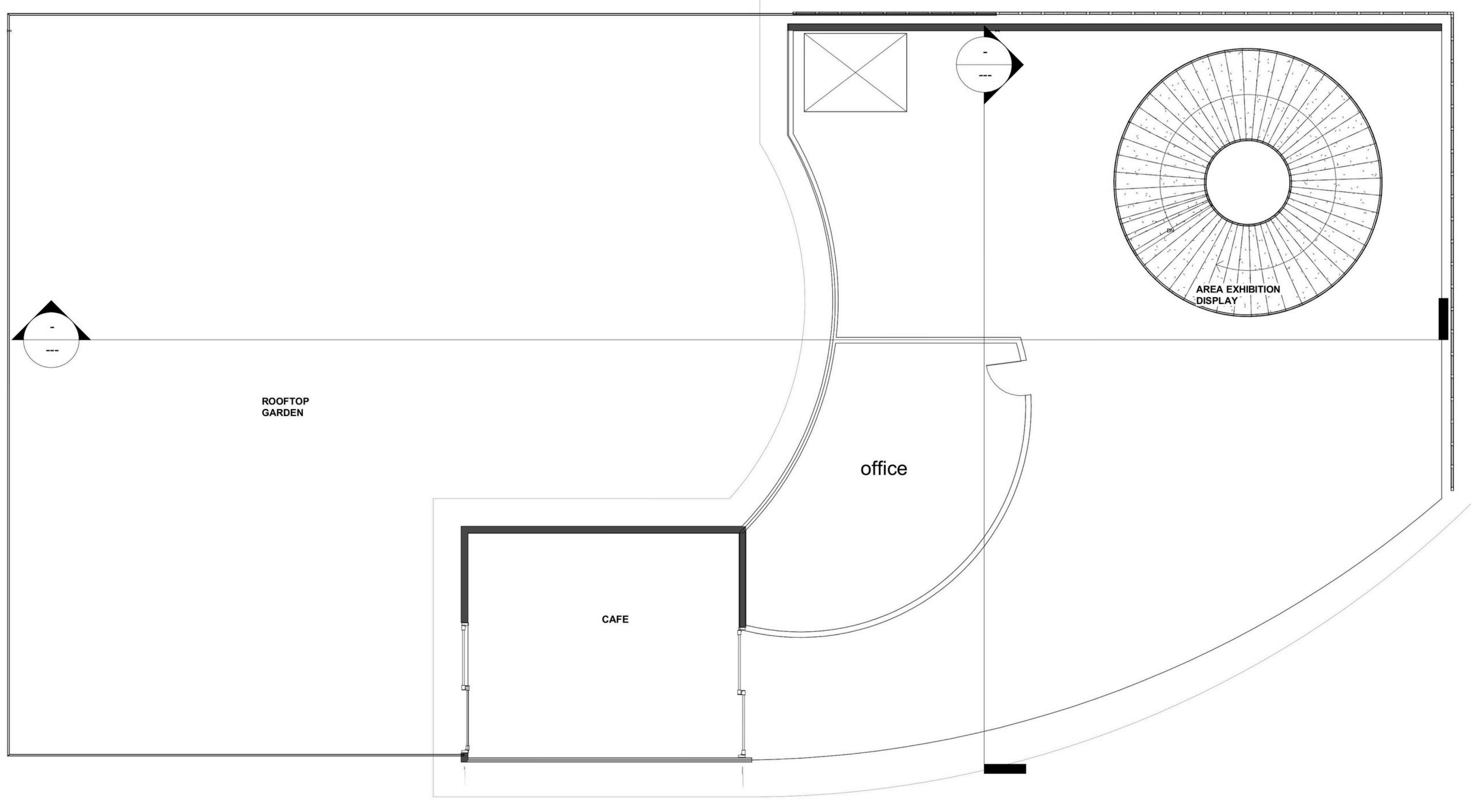
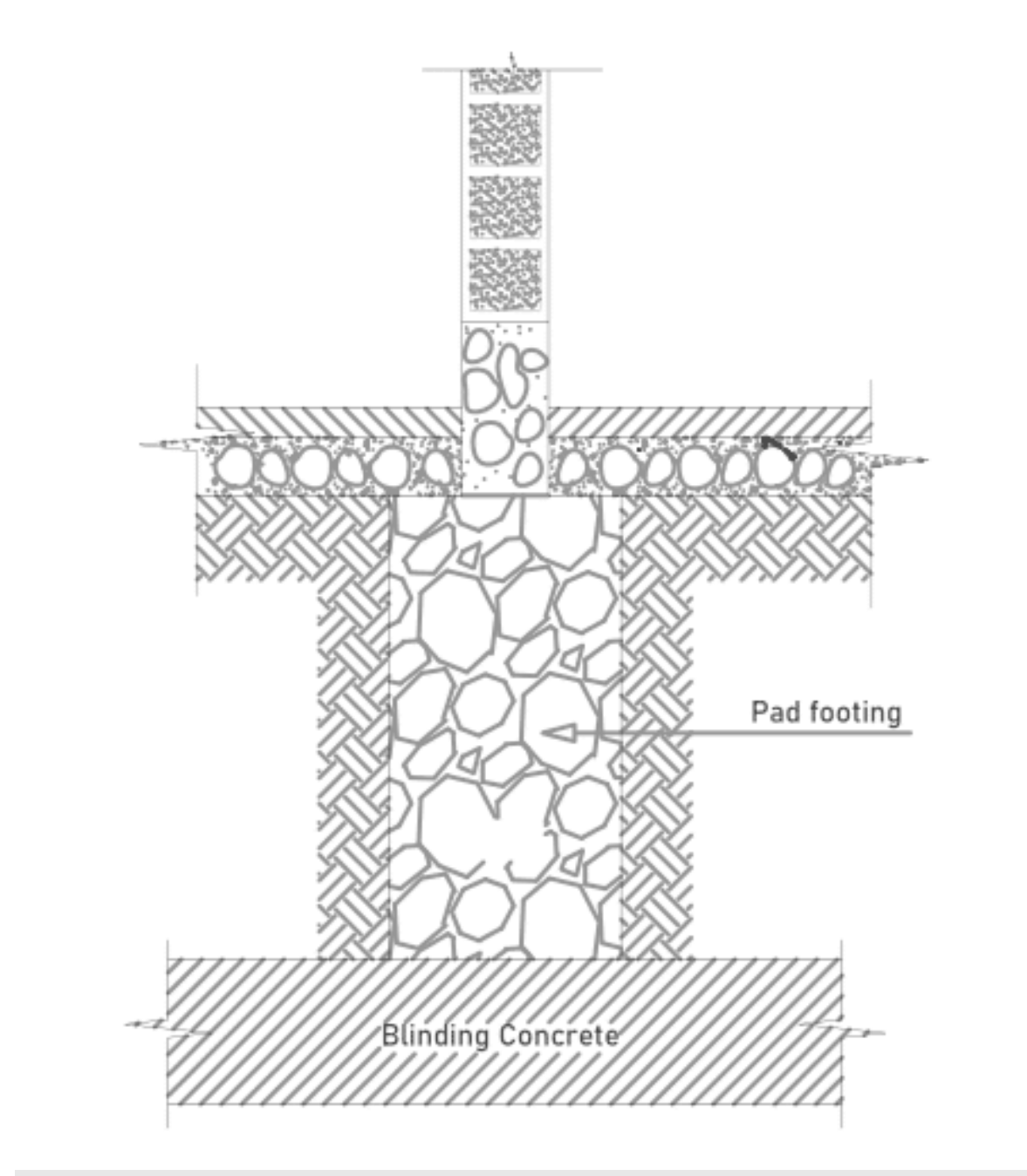
First floor plan

Scale 1:100

| <u>Space</u> | <u>Area</u> |
|--------------|-------------|
| 1)Office     | 30m2        |
| 2)Cafe       | 28m2        |

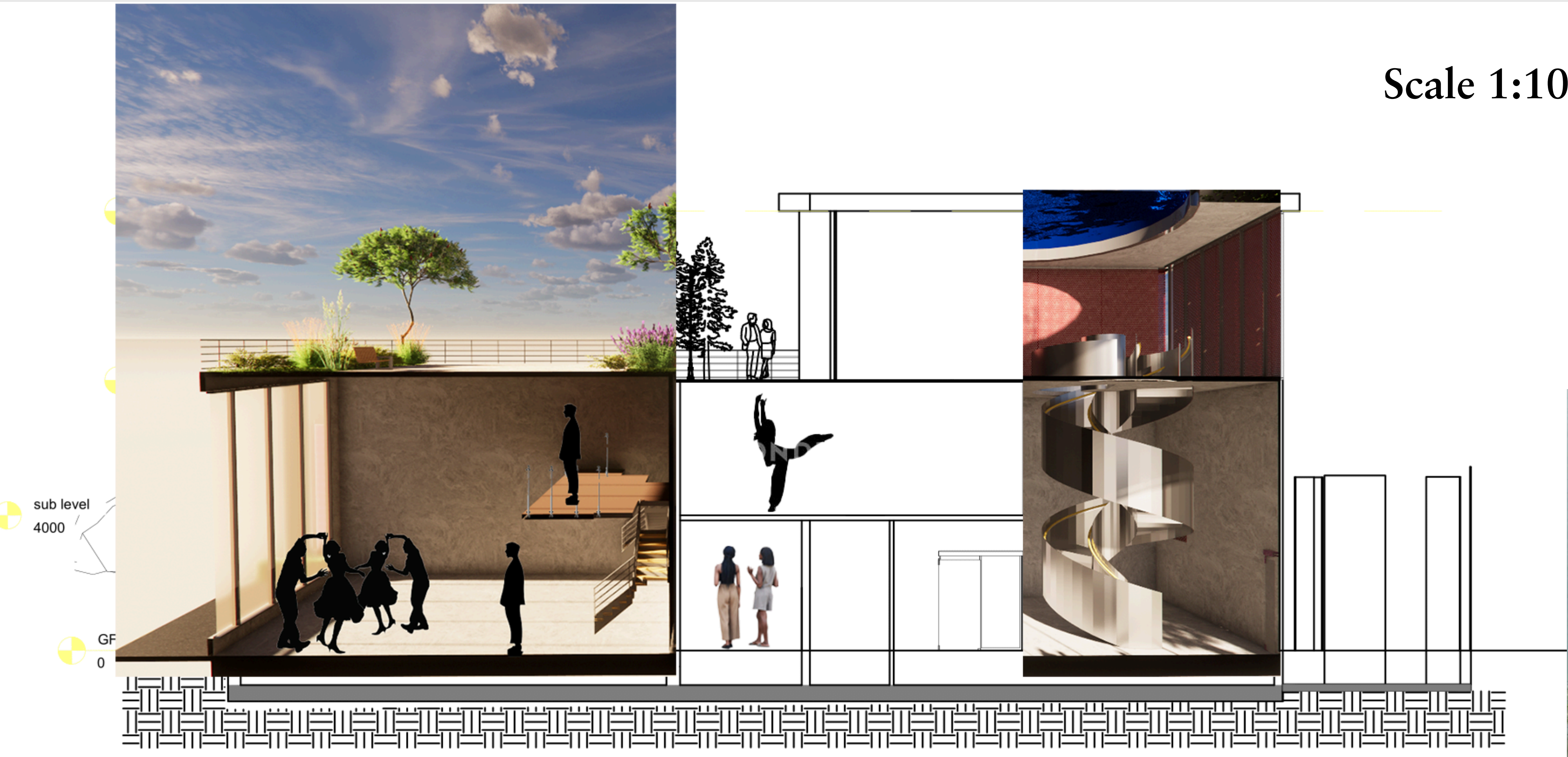
Detailed drawing

Scale 1:20



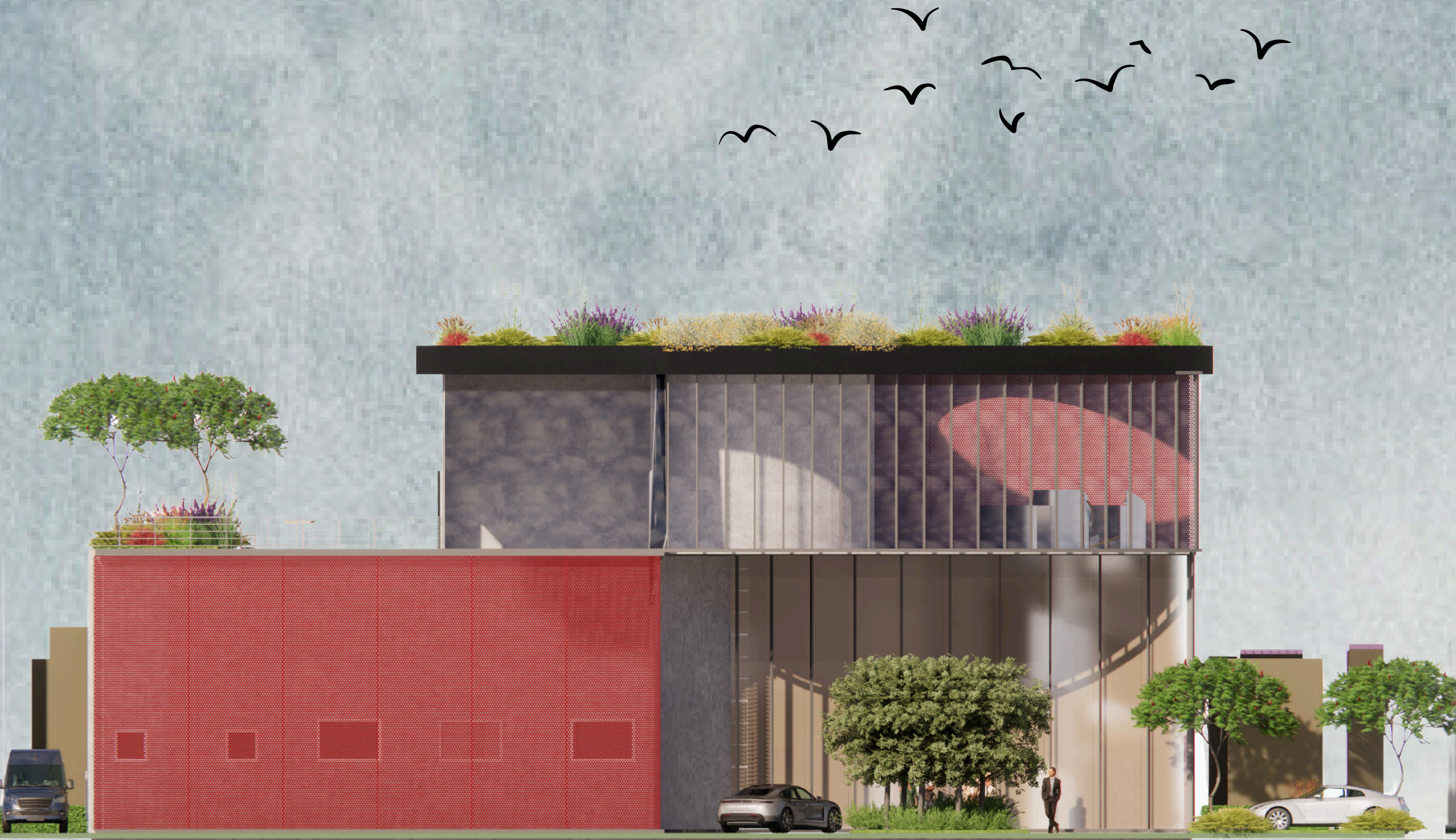
Section A-A'

Scale 1:100





Front Elevation



Back Elevation



Right Elevation



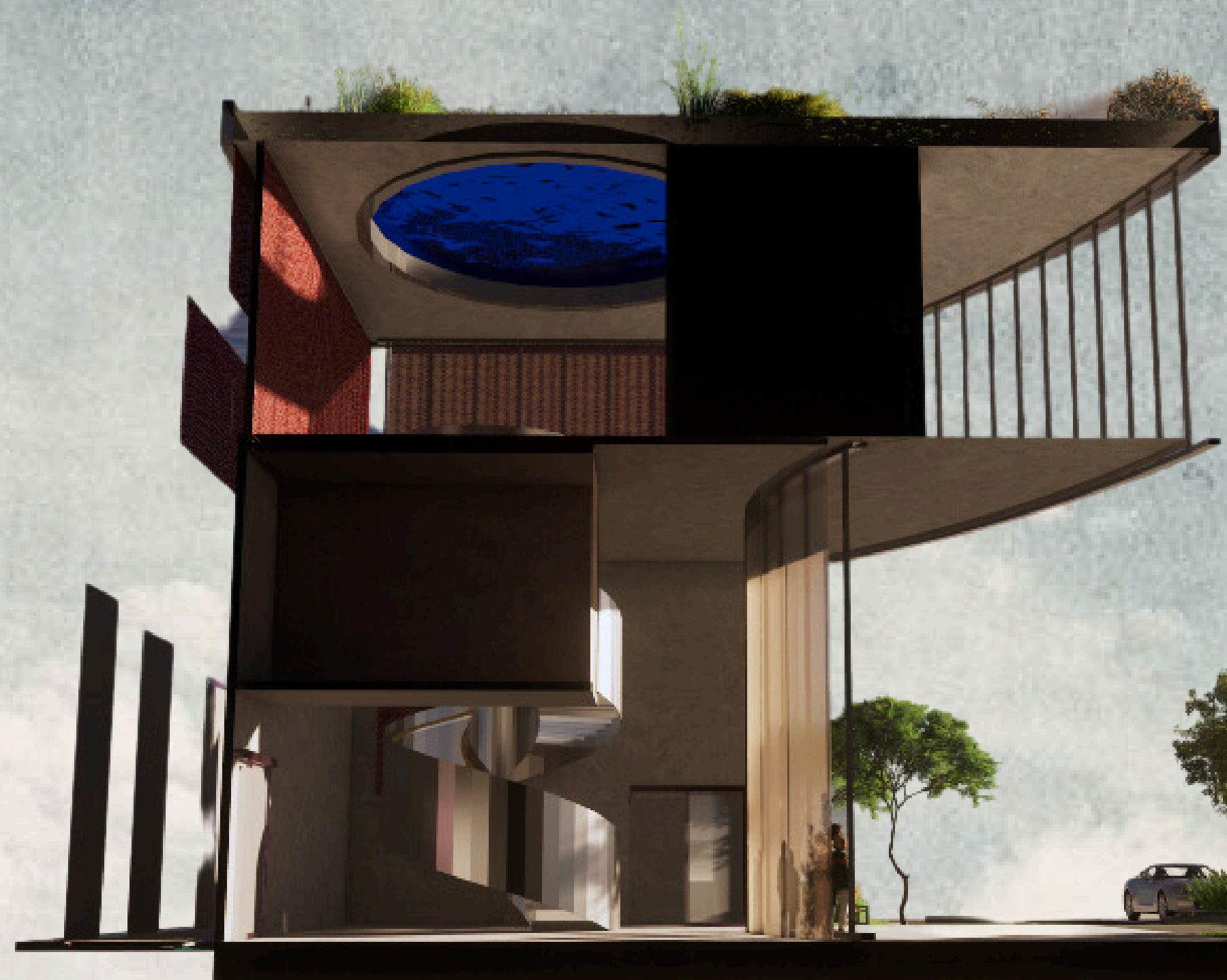
Left Elevation





# Section B-B'

Scale 1:100



# Poetic journey

